

regione: CAMPANIA
comune: SALERNO

PUA SUB-COMPARTO CR_29 sub.2
ANGELLARA-FERROVIA-ARBOSTELLA

commitenti: Sign.ri VETTORI GUGLIELMO, VETTORI GIOVANNI BATTISTA

Guglielmo Vettori
Giovanni Vettori

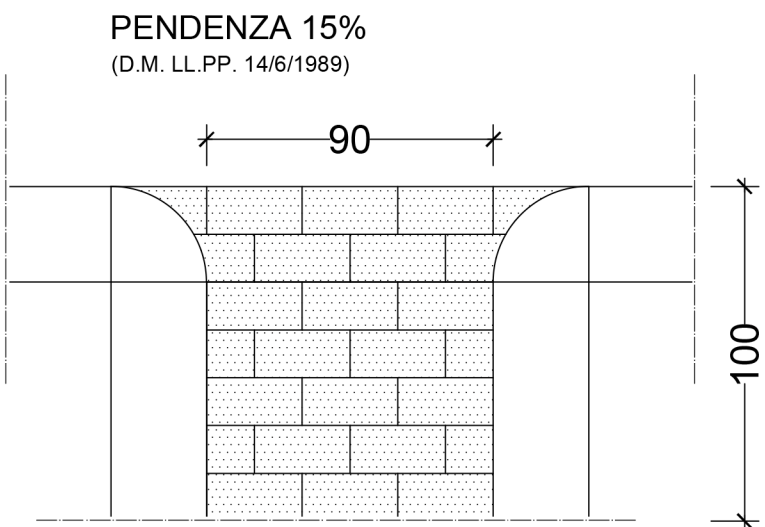
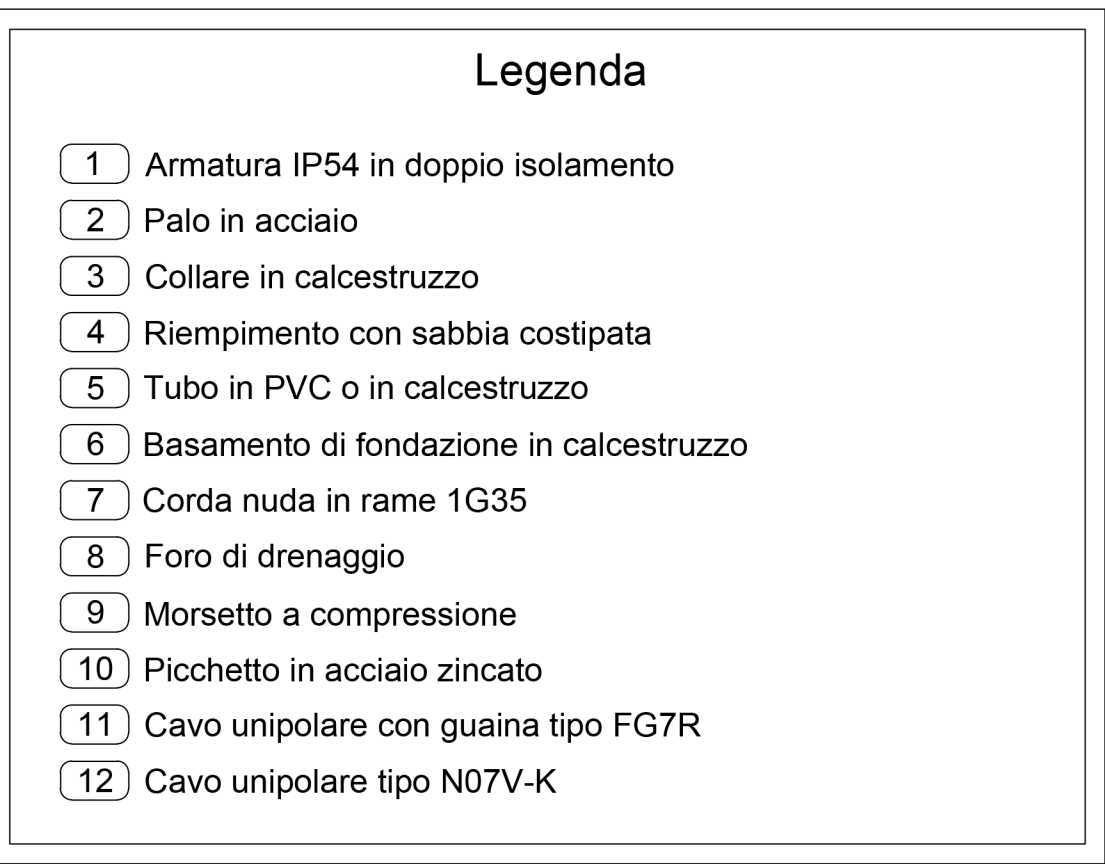
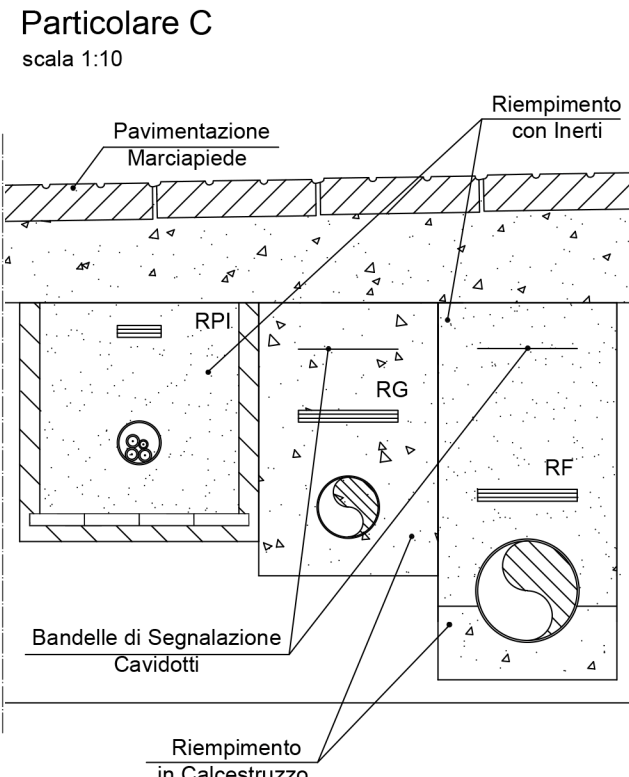
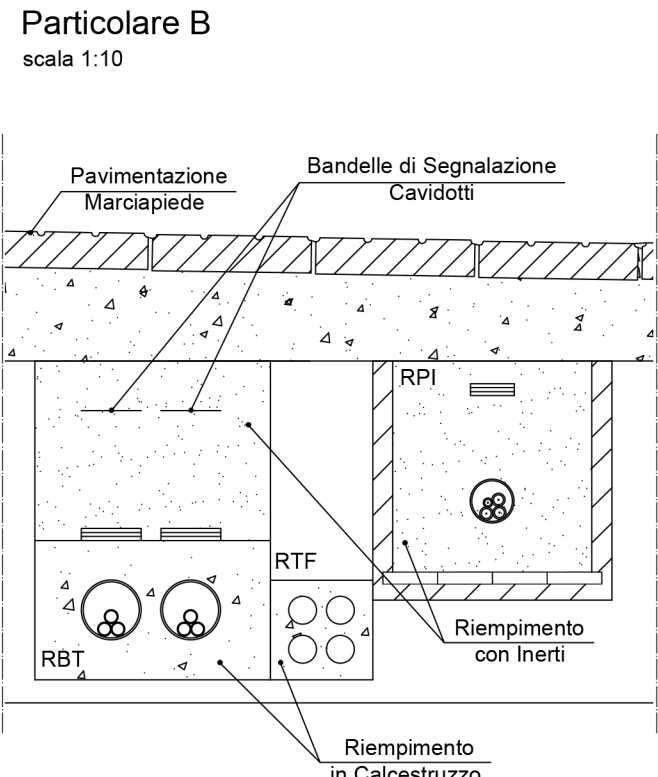
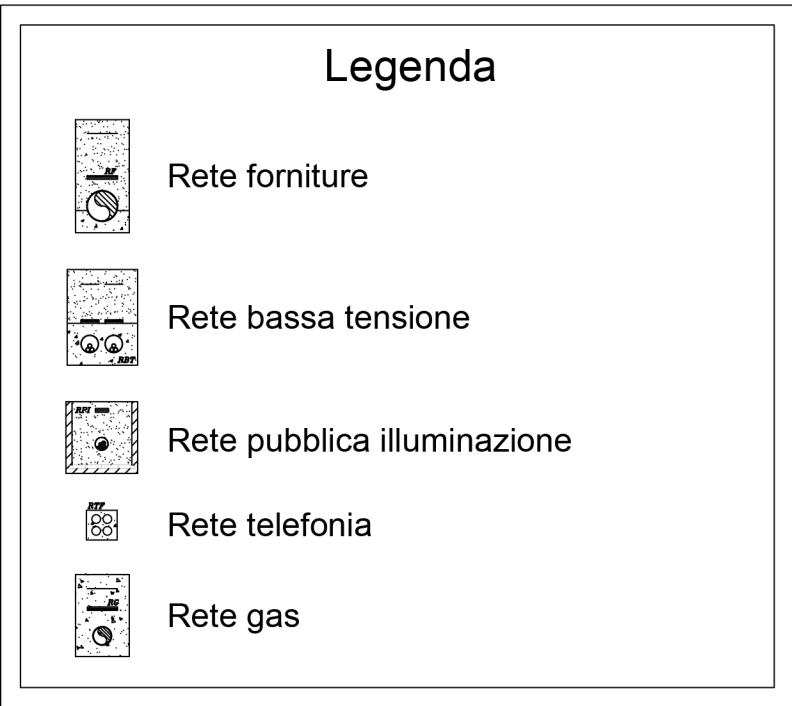
elaborati: STATO DI PROGETTO

Particolari costruttivi: pozzetti - caditoia -
condotta rete idrica/elettrica/gas

32
VAR 01

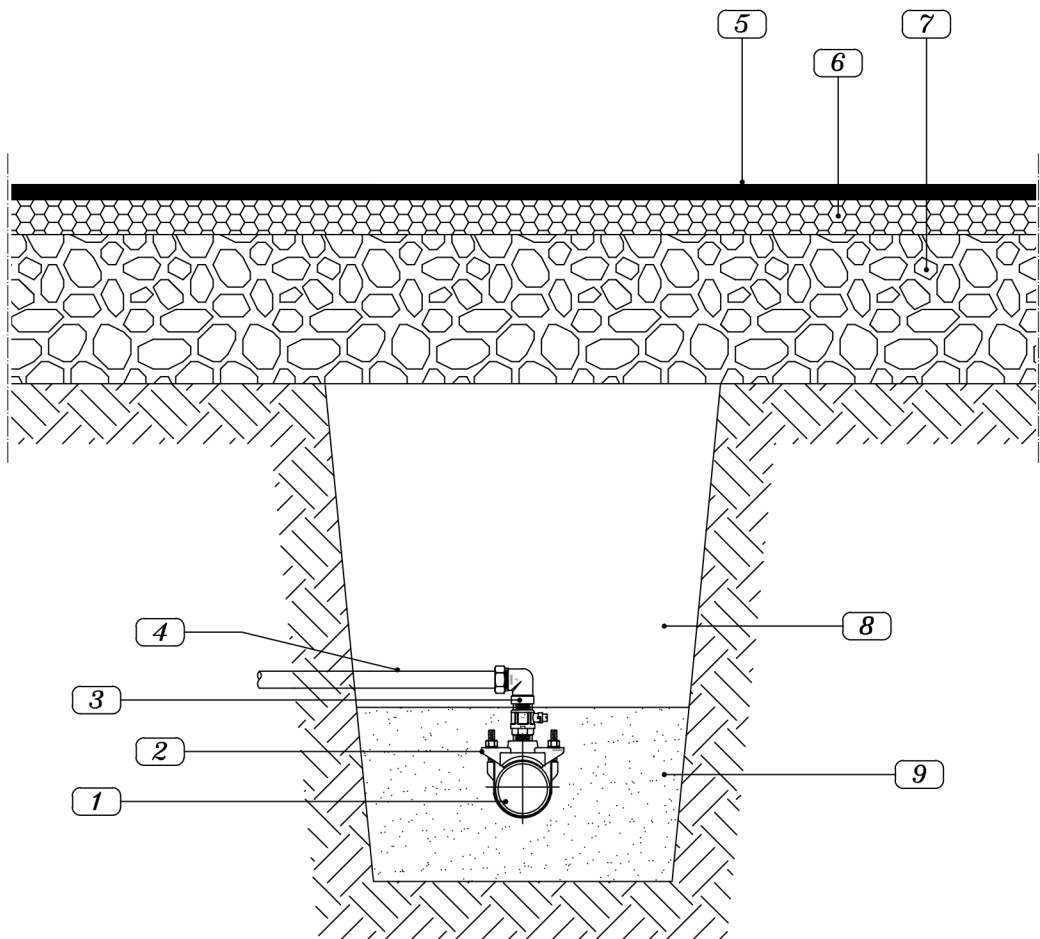
data
OTTOBRE 2021

gruppo di progettazione:
arch. NICOLA MANZO
arch. GIOACCHINO CARPINELLI
per. ind. VINCENZO TROMBETTA
Nicola Manzo
Gioacchino Carpinelli
Vincenzo Trombetta
ing. GAETANO D'AMBROSIO
Gaetano D'Ambrosio
progettazioni specialistiche:



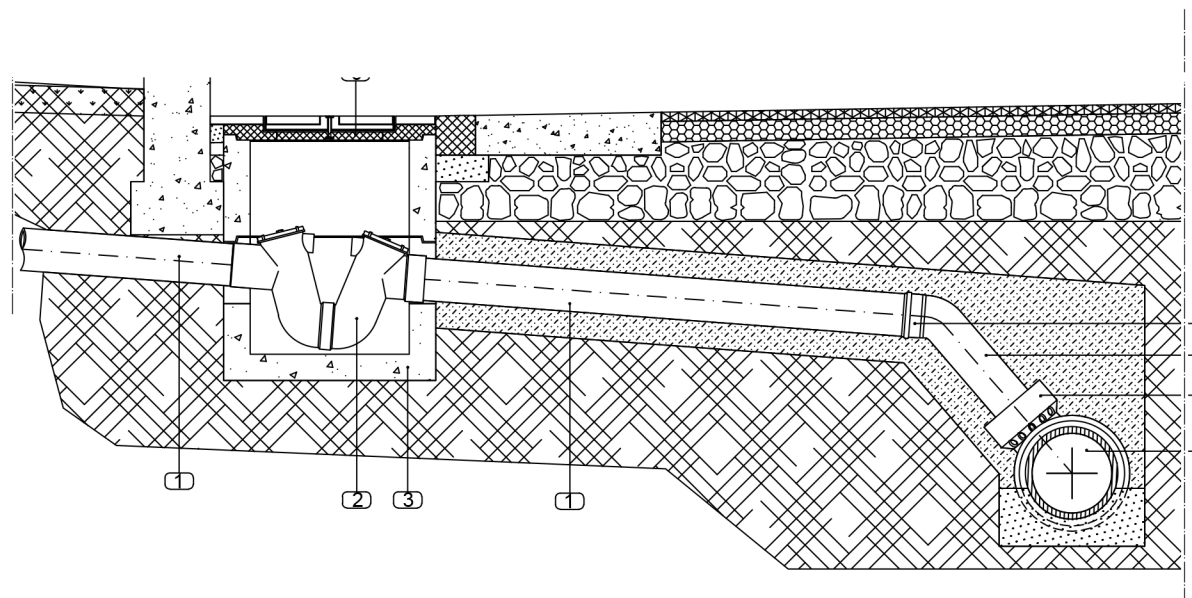
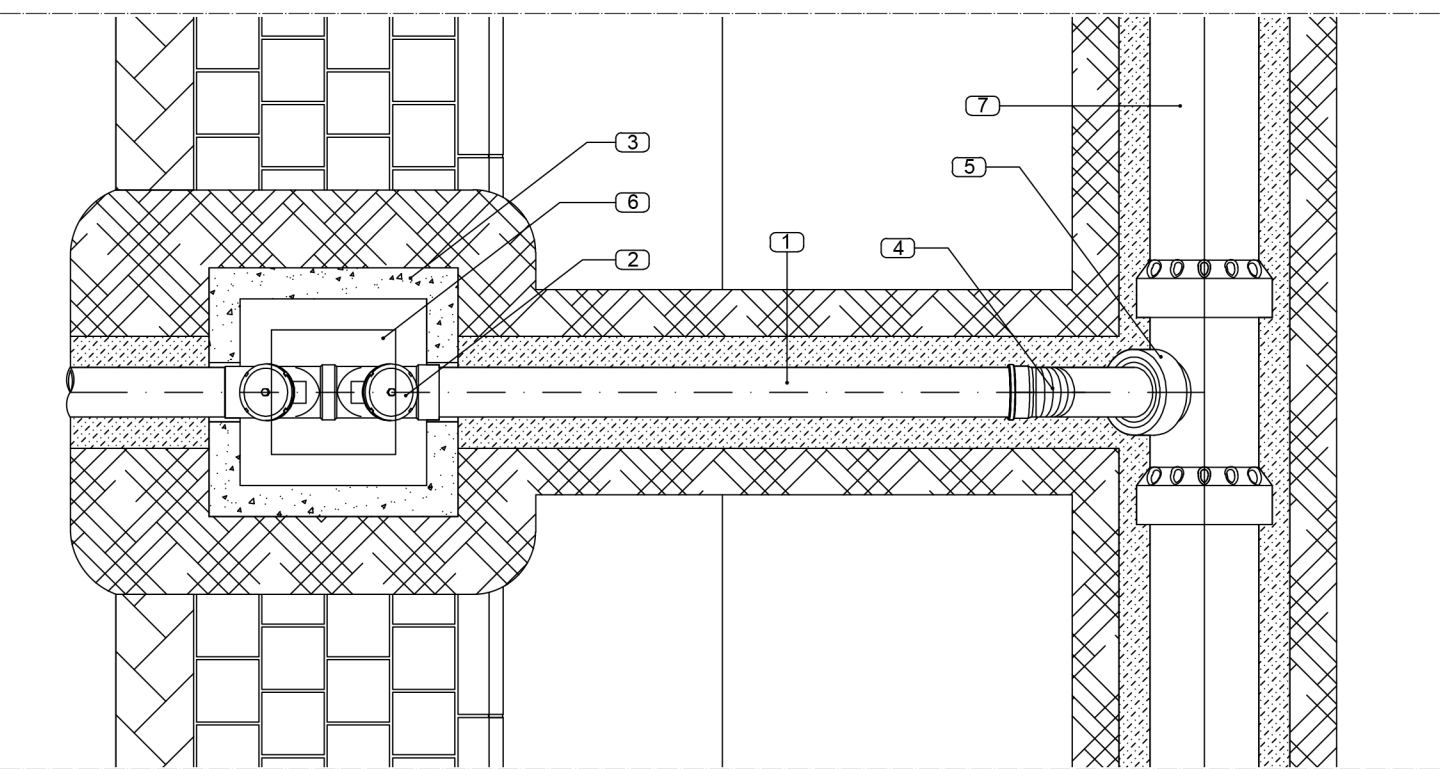
MARCIAPIEDI CON RACCORDO
PER DIVERSAMENTE ABILI
SCALA 1:25

PARTICOLARE ALLACCIO ALLA RETE IDRICA
SCALA 1:25

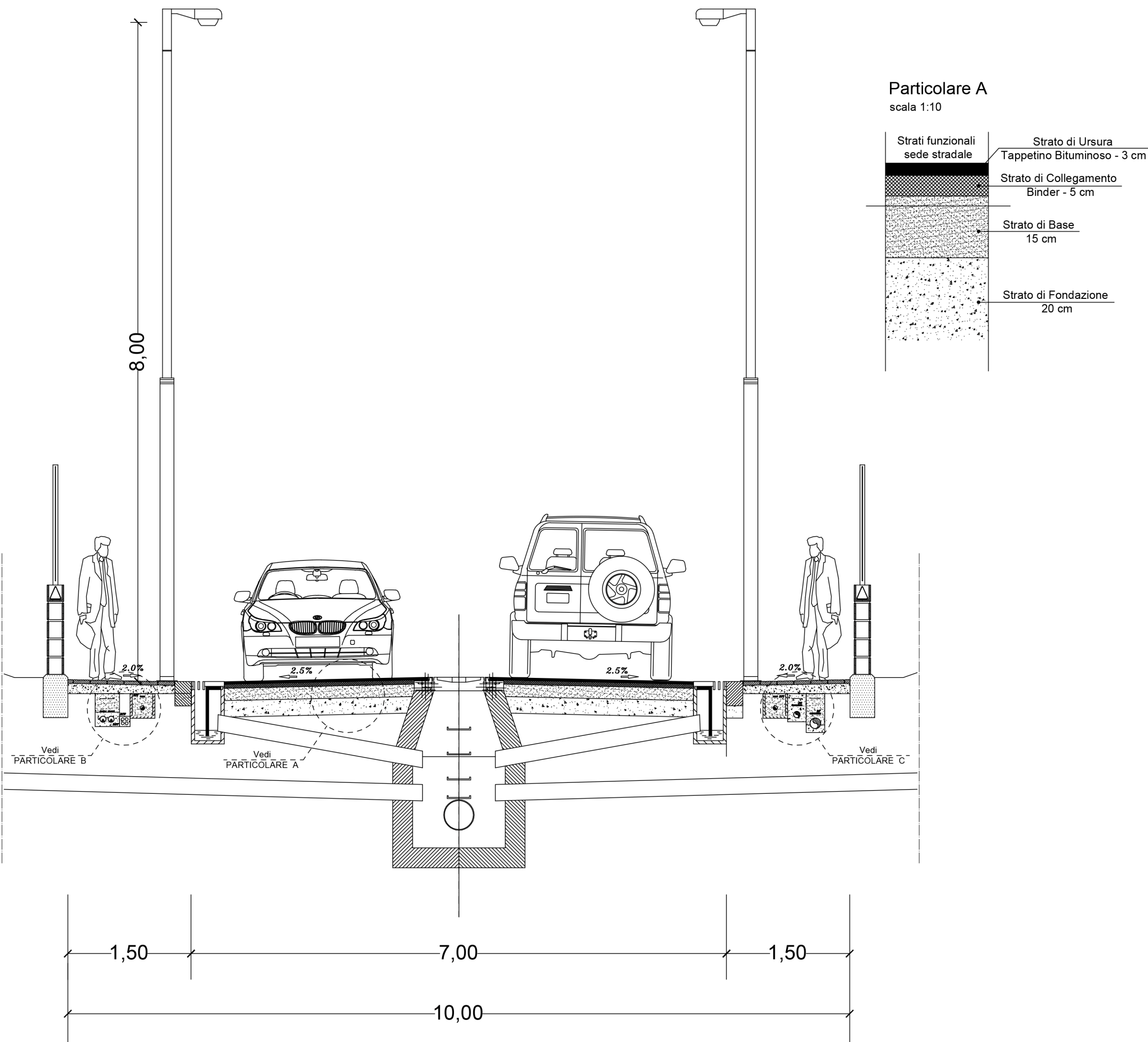


Sezione trasversale

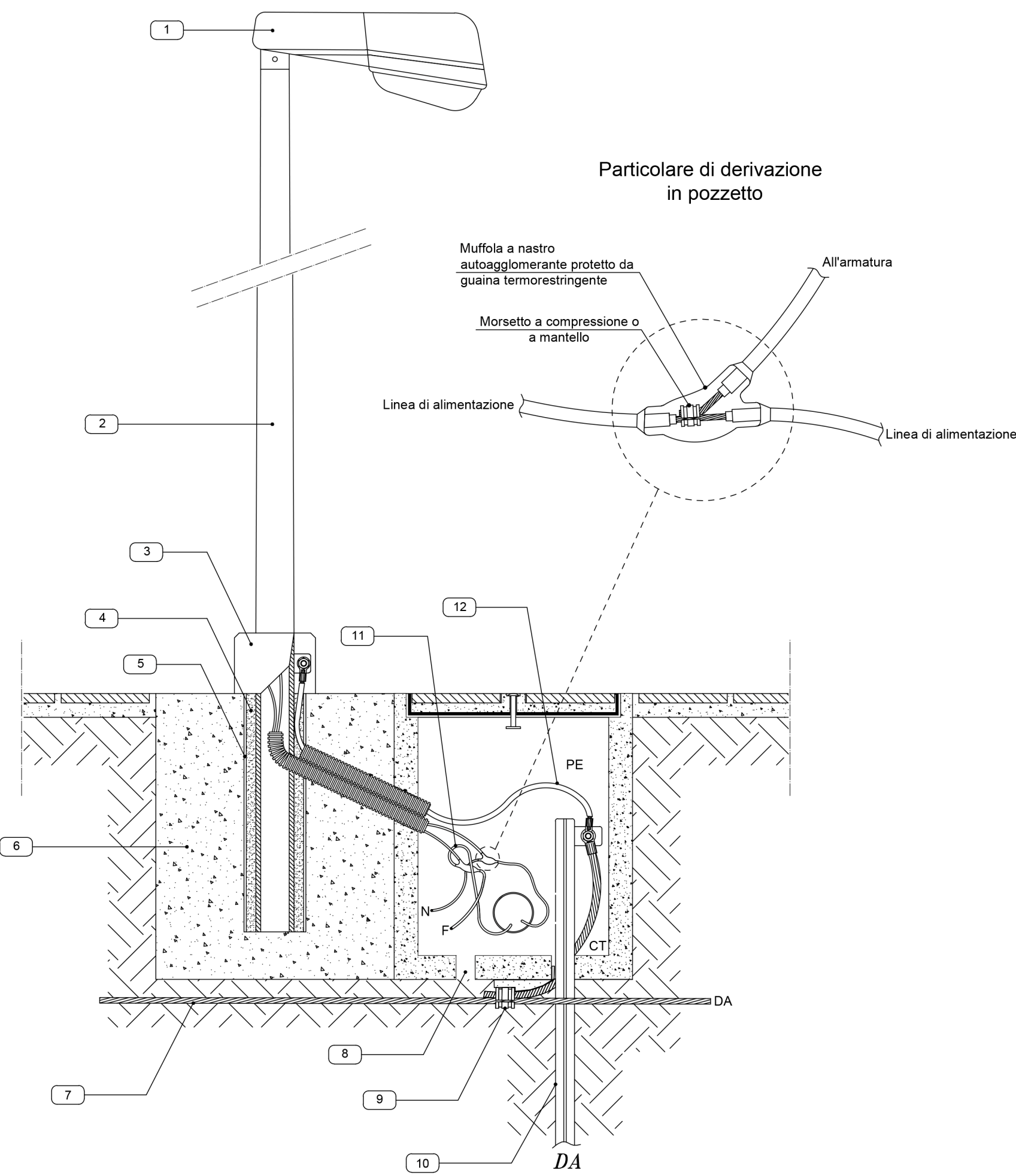
PARTICOLARE ALLACCIO ALLA RETE FOGNARIA
SCALA 1:25



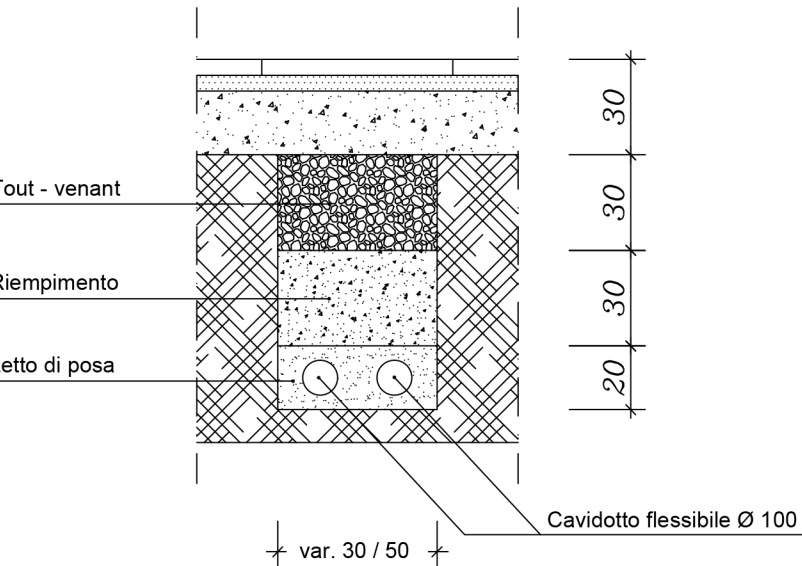
Sezione



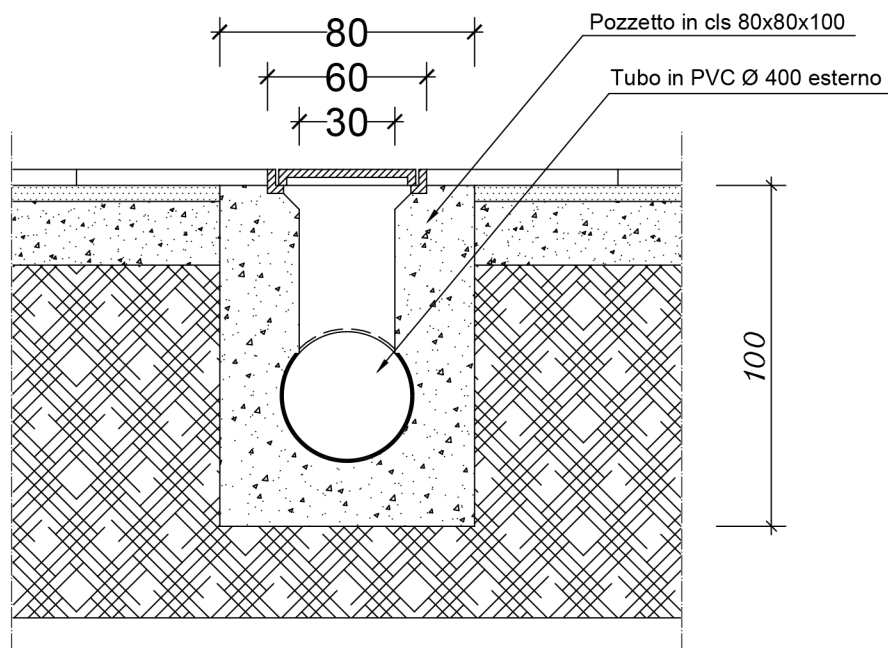
SEZIONE STRADALE TIPO
SCALA 1:50



PARTICOLARE ALLACCIO PALO ILLUMINAZIONE
SCALA 1:10



SCAFO TIPO (POSA TUBI IN PVC)
SCALA 1:25



PARTICOLARE CADITOIA
SCALA 1:25